



High Speed BGA Connectors (Mezzanine)



IT3 Series

10+Gbps

High Speed Transmission

- Single connector for differential transmission, single-ended transmission and power
- Floating 3-piece design for Mounting Flexibility and Excellent Reflow Solderability
- Stacking Height: 17-42mm
- No. of Pos.: 100, 200, 300pos.

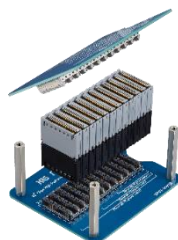


IT5 Series

25+Gbps

High Speed Transmission

- Designed with optimal signal integrity and the unique, effective floating design of the IT3 Series
- The Helix Interposer with HRS Original FEXT Cancellation Technology prevents noise
- Stacking Height: 14-40mm
- No. of Pos.: 100, 200, 300pos.



IT8 Series

28+Gbps (2-Pieces)/56+Gbps (3-Pieces)

High Speed Transmission

- New design realizes low stacking height and floating mechanism (2-piece)
- HRS original FEXT cancellation technologies and quasi-coaxial design enable ultra high speed signal transmission
- Stacking Height: 10-13mm (2-piece), 14-46mm (3-piece)
- No. of Pos.: 120, 192, 288pos.

High Speed SMT Connectors (Mezzanine)



FX10 (2-Pieces)

10+Gbps

High Speed Transmission

- Pitch: 0.5mm
- Impedance: 85&100Ω
- Stacking Height: 4, 5mm
- No. of Pos.: 80-168pos.

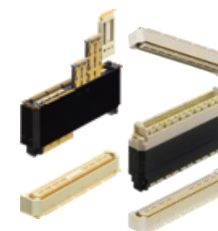


FX10 (3-Pieces)

15+Gbps

High Speed Transmission

- Pitch: 0.5mm
- Impedance: 85&100Ω
- Floating 3-piece Design for Mounting Flexibility
- Stacking Height: 8-13mm
- No. of Pos.: 120, 144, 168pos



XG1 Series

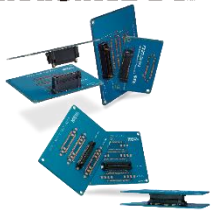
16+Gbps

High Speed Transmission

- Pitch: 0.5mm
- Multiple Blades for Differential 85&100Ω, Single-ended and Power
- Stacking Height: 20-23mm (2-piece), 30-42mm (3-piece)
- No. of Pos.: 78-260pos.

High Speed Transmission Board-to-Board SMT Connector (Mezzanine, Vertical, Coplanar)

FunctionMAX™



FX23/FX23L Series

**8+Gbps
High Speed Transmission**

- Pitch: 0.5mm
- Floating Design for Mounting Flexibility
- Stacking Height: 8-30mm
- No. of Pos.: 20-120 (Signal)
4 (Power)
- Orientation: Mezzanine, Vertical

FunctionMAX™



FX18 Series

**10+Gbps
High Speed Transmission**

- Pitch: 0.8mm
- Multi-function Contacts for Power, Ground and Sequential Connections
- Stacking Height: 10-30mm (2-pieces)
25-45mm (3-pieces)
- No. of Pos.: 40-180
- Orientation: Mezzanine, Coplanar, Vertical

FunctionMAX™



ER8 Series

**10+Gbps
High Speed Transmission**

- Pitch: 0.8mm
- Smooth Insertion & High Mating Reliability
- Stacking Height: 7-12mm
- No. of Pos. : 10-120
- Orientation: Vertical, Mezzanine



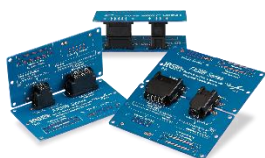
IT9 Series

**28+Gbps
High Speed Transmission**

- Pitch: 0.5mm
- Floating Design
- No. of Pos. : 84, 152, 224
- Orientation: Vertical

Power Connector

FunctionMAX™



FX30B Series

Rated Current: 25A Max.

- Stacking Height: 11mm (Coplanar , Vertical)
20-30 (Mezzanine)
- No. of Pos.: 2-5
- Floating Design



IT-P Series

Rated Current: 60A Max.

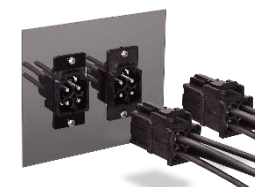
- Stacking Height: 10-44mm
- Floating 3-piece Design for Mounting Flexibility
- No. of Pos.: 2



DF60 Series

Rated Current: 65A Max.

- No. of Pos.: 1-6
- Pitch: 10.16mm
- Applicable Cable : 8, 10, 12 AWG
- HRS Original independent 5-point contact design secures high contact reliability



EM35M Series

Rated Current: 70A Max.

- No. of Pos. : 4pos.
(Three phase power source + ground)
- Applicable Cable : 8-10 AWG
- Quick and secure Snap-On lock
- Configuration: DIN rail mount & Panel mount